



## Covid-19 vaccination: Briefing for stakeholders

Our focus over the last few weeks has been to provide the vaccine to our younger residents, specifically those aged 16 and 17-years-old, as well as children aged between 12 and 15-years-old with an underlying health condition.

Good progress has been made with both age groups, with the vaccine uptake for the 16 and 17-year-olds jumping 10 per cent in the last seven days.

Fifty-two per cent of this age group in our area have now had the vaccine, along with more than 35 per cent of the 12 to 15-year-olds who meet the criteria.

Of course, there is still a way to go, and we will continue doing all we can, while working closely with all our partners, to help reach our vaccination goals.

**Gill May,**  
Director of Nursing and Quality

## Updates



### **Covid-19 jabs for local university students**

Bath Spa University and the University of Bath will be holding a number of walk-in clinics for new and returning students at their respective campuses between Wednesday 8 September and Friday 8 October.

### **Planning for vaccination of younger children**

Last week, the Joint Committee on Vaccination and Immunisation decided against recommending that all 12 to 15-year-olds have the vaccine.

However, the JCVI did say that the Chief Medical Officers may wish to take a different stance, so we continue to plan for how this age group will be



vaccinated should the green light be given.



## Vaccinating staff in social care environments

Work is continuing to ensure as many care home staff are fully vaccinated before Thursday 11 November; the deadline set by the government for all care home workers to be fully vaccinated.

A webinar between the CCG and all care homes in Wiltshire took place on Monday 6 September.

A [separate consultation](#) looking at mandatory vaccination for healthcare staff launched today.

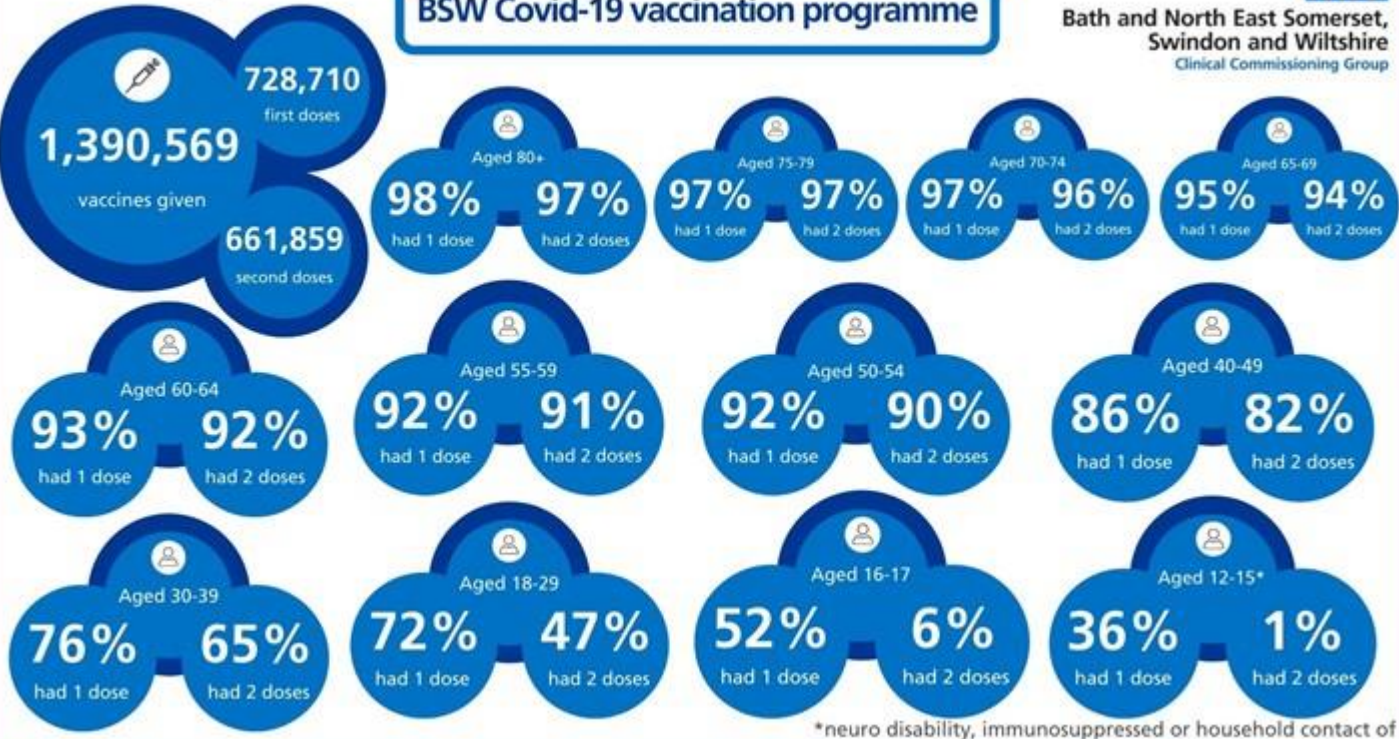
**Vaccination progress to date**

Data correct as of 8 September 2021

### BSW Covid-19 vaccination programme



Bath and North East Somerset,  
Swindon and Wiltshire  
Clinical Commissioning Group



The BSW Covid-19 vaccination programme is being led by BSW CCG with support from partner organisations including voluntary community and social enterprises.

