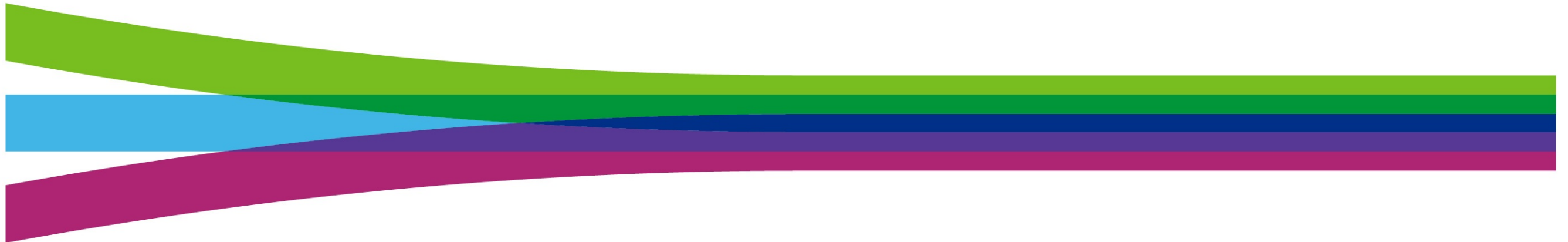


Delivering Integrated Care Together - Preparing for Covid-19 Phase 3 and Phase 4

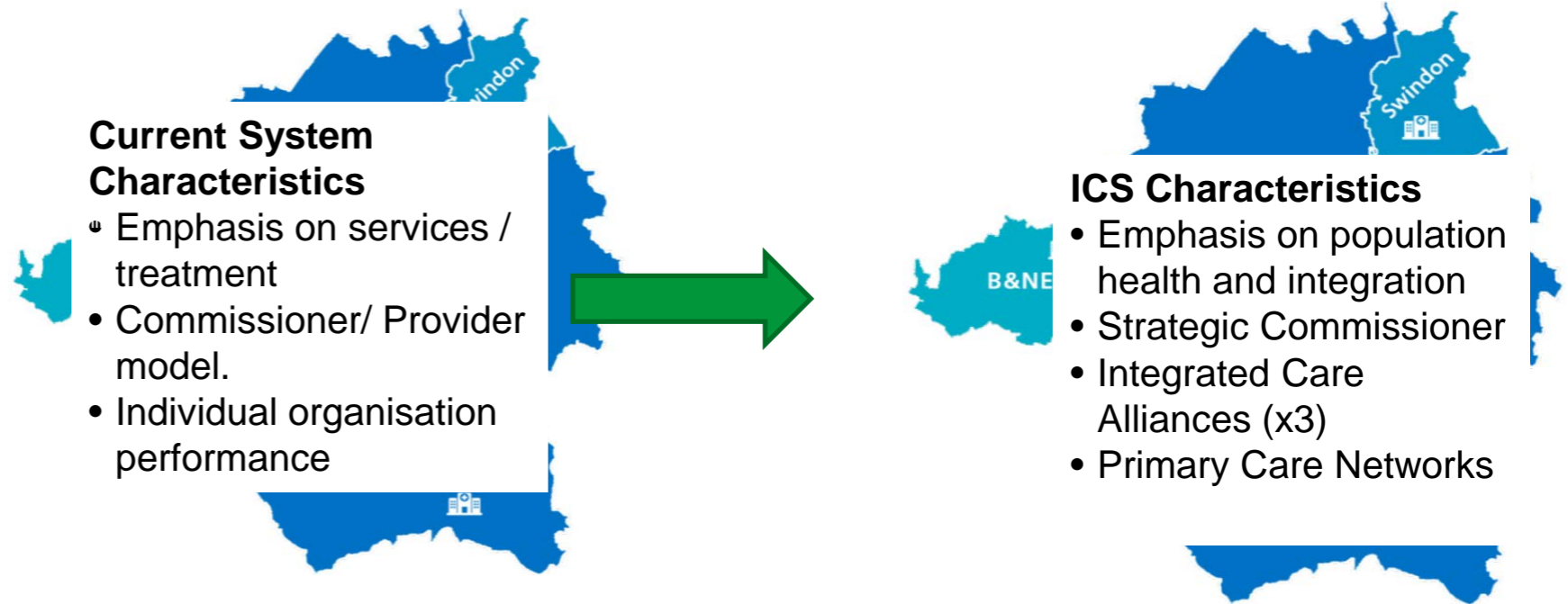
Suzannah Power



Delivering Integrated Care Together - Preparing for Covid-19 Phase 3 and Phase 4

BSW's vision is to **work together to empower people to live their best lives.**

To support the delivery of this vision BSW is striving to become an Integrated Care System in April 2021.



System (BaNES, Swindon and Wiltshire)	<ul style="list-style-type: none"> • 980k population • System strategy and planning • Strategic commissioning
Place (3 Integrated Care Alliances)	<ul style="list-style-type: none"> • Borough/Council level • Integrate hospital, council and primary care services
Neighbourhood (22 Primary Care Networks)	<ul style="list-style-type: none"> • Proactive and integrated care • Community involvement • Strengthened and networked primary care

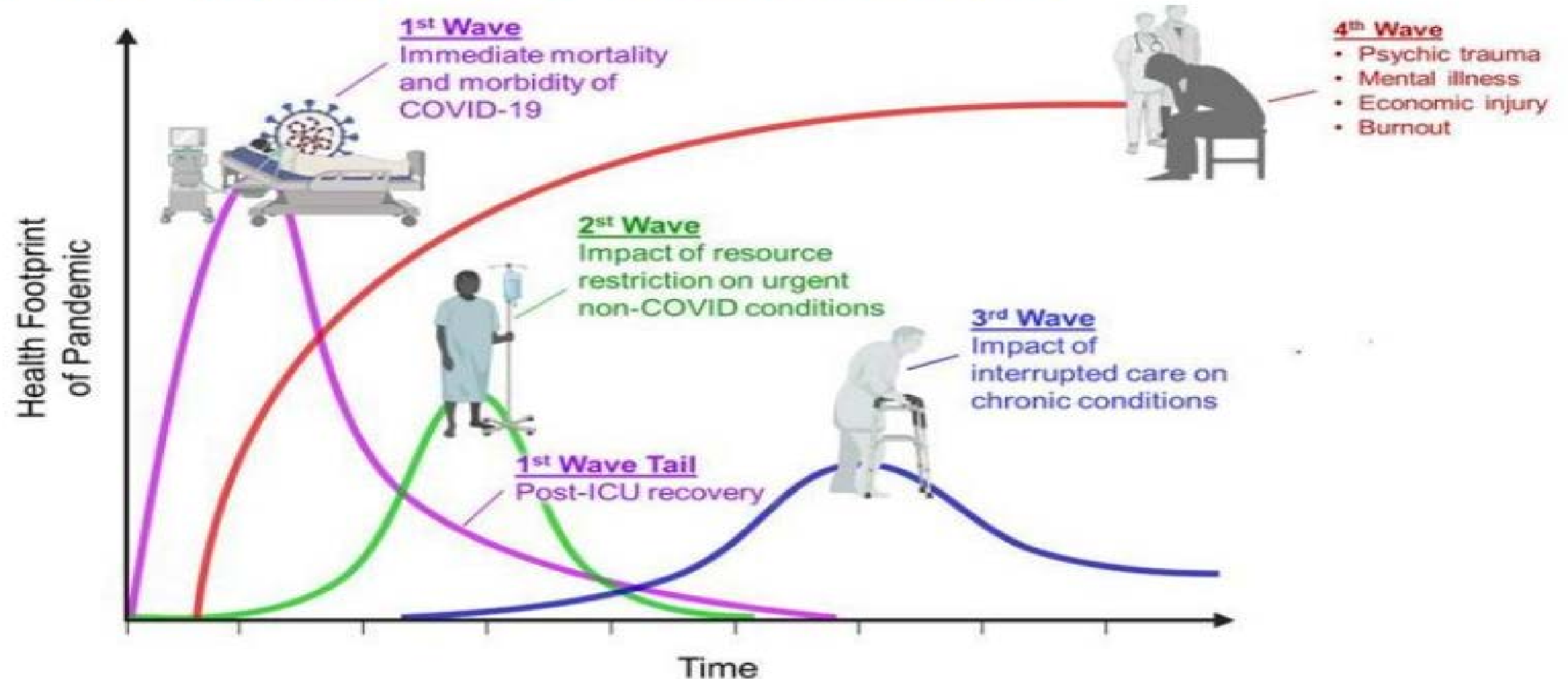
Delivering Integrated Care Together - Preparing for Covid-19 Phase 3 and Phase 4

Phase 3 guidance is likely to be focused on 7 key areas

- Maintain critical care infrastructure to meet future Covid-19 demand
- Minimise the risks to non-Covid-19 services
- Minimise/clear the elective backlog and create maximum capacity
- Address health inequalities and the potential for these to increase due to the pandemic, and additional mental health needs
- Address staff wellbeing and workforce numbers
- Model for more integrated primary, community and social care, including new discharge arrangements
- Develop the new NHS landscape and the role of ICSs

What should be the role of Primary Care Commissioning Committee in the move to an integrated care system and the response to our Phase 3 response?

Preparedness: The Needs Assessment Peri- and Post- Pandemic



BSW Primary Care Commissioning Committee

