

10 August 2020

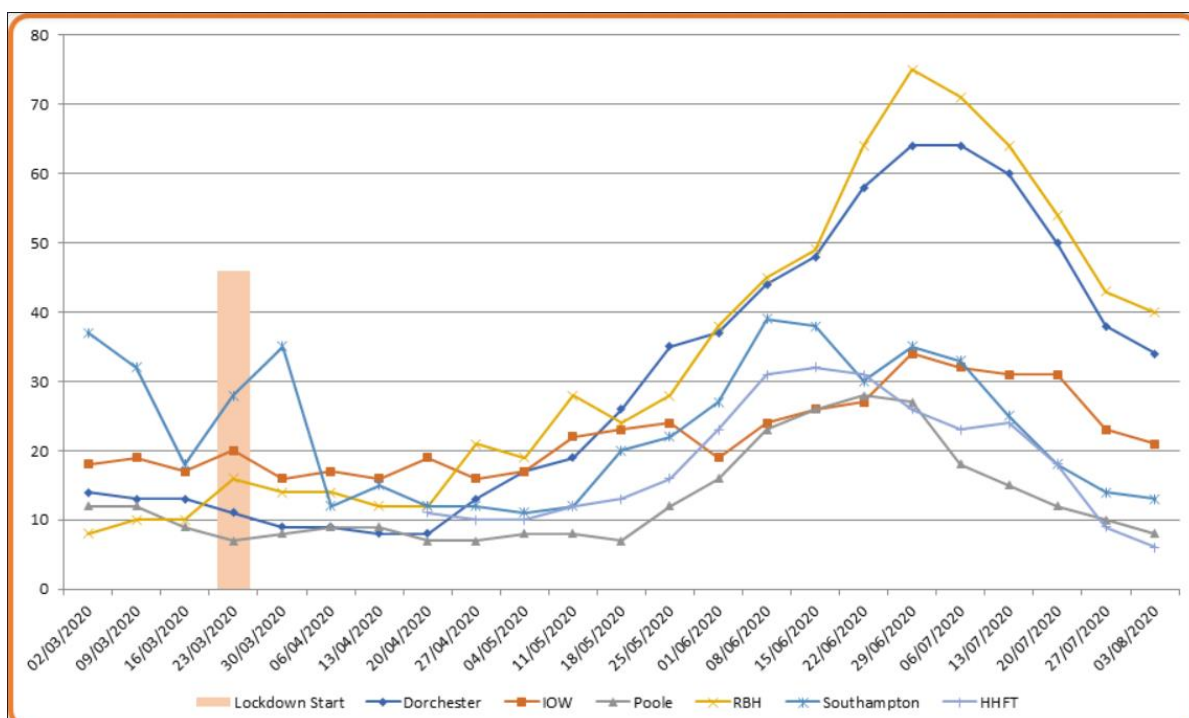
Wessex Cancer Alliance Update Bulletin 18.

Please find below, details of the most recent communications and guidance issued for Cancer. Please share this with colleagues and other teams who may find these updates useful.

A message from Wessex Cancer Alliance Director, Sally Rickard:

At a time when I am aware many of us are trying to take some time off, post first wave and potentially in amongst the huge effort to restart all of our cancer and other services, I wanted to share some really positive news. Firstly, that Wessex were asked to present to the national Cancer Team, including representatives from all alliances across the country, on the local performance around recovery of 104-day waiters. Significant contribution to this has been the effort of our cancer managers, data teams and COOs supporting working to a single view of the Wessex Cancer Dashboard. There is much more to come on this work and we hope to work with you to build something really useful for all our stakeholders, but already thanks to the work of our local expertise in Bournemouth and the support of all our cancer managers to build and improve on their learning, we have a way of knowing exactly how long every patient has waited, with really current and rich information, which has supported recovery and minimised the number of patients waiting over 104 days. We have a Wessex-wide Cancer Hub which remains an option for patients not currently confident about entering NHS sites for their cancer treatment, as the hub is located on an offsite private hospital location without known Covid-19 treatment areas. Cancer clinical leads from every provider have contributed to and agreed the clinical protocols around the hub and I am keen all cancer pathways offer this as an alternative for patients where they really do not want to have their treatment as planned in a local trust due to concerns over infection.

Chart – number of patients waiting over 104 days, by Trust.





All trusts face challenges with patients for whom the wait for a diagnosis continues, not due to lack of capacity but due to the patient's ongoing concerns about attending diagnostic testing appointments, but I urge you to continue to hold these patients on your trust lists, or to have virtual communications with the patients and then with their GP to see how best we can support them. For patients waiting for treatment, or mid-way through their treatment, who do not wish to come in to hospital at the moment, again we recognise this can be challenging for trusts making offers to patients and not able to find a route for the treatment. This is an issue we are very aware of and will raise for further discussion at our Cancer Waiting Times Meeting on Tuesday 11th, this week.

Following [Simon Steven's letter](#) setting out the Phase 3 Covid response there are some key actions for us in cancer services. The priorities laid out in the letter closely align with the three priorities we have focused on in the Alliance and continue to do so and which form the basis of our 2020/21 delivery plan, particularly

- restoring urgent 2WW referrals to pre-pandemic levels
- taking immediate action to reduce the number of longer waiters, starting with those waiting over 104 days and
- ensuring that we have sufficient diagnostic and treatment capacity in place to meet demand through the autumn.

London have developed an 'Adopt and Adapt' approach to recovery of Endoscopy services, which is now being coordinated for us across the South East and South West by our regional teams. In addition, we have Alliance led working, building tools and supporting information to help plan for medium and longer term endoscopy pressure issues in addition to the immediate recovery to pre Covid levels of activity.

Further 'Adopt and Adapt' regional leadership approaches are being taken across the country, with South West region working to lead a recovery plan for diagnostic services and, announced on Thursday last week, South East region being selected to lead on the cancer specific 'Adopt and Adapt' planning nationally. What this leadership position will mean for us locally and what resource and opportunity may follow is currently unclear, but we will update further as soon as we learn more. The first workshop for Endoscopy is planned for 19th August and a pre briefing session on the Cancer programme is planned for Monday 10th August.

Secondly, you will have seen publication of "WE ARE THE NHS: People Plan 2020/21 – action for us all" which can be found here: <https://www.england.nhs.uk/ournhspeople/>. The Plan is practical and ambitious, setting out the focused action that NHS people need right now and for the rest of the financial year. While the 2020/21 Plan does not focus on the longer-term questions of how we grow the future workforce the NHS needs, it nevertheless includes some important new commitments on the cancer workforce which we developed through the work of the NHS Cancer Programme Workforce Task and Finish Group earlier in the year. These include:

- 250 additional grants for nurses wishing to train as Clinical Nurse Specialists
- 100 additional grants for nurses wishing to become chemotherapy nurses
- an additional 150 training places for reporting radiographers.



The Plan also commits to expanding shortage specialties by an extra 250 foundation year 2 posts in 2020/21, to grow the pipeline into NHS priority areas including cancer, such as clinical radiology, oncology and histopathology.

Alongside the Plan, please view "[Transforming the cancer workforce](#)". This brief will help all of us in the Wessex Alliance continue to maximise the efficiency of our cancer workforce, including providing information on the effective deployment of returning cancer specialists, innovative use of the NHS volunteers and effective workforce redesign.

Thank you again for your ongoing engagement and support of the Alliance as a programme to transform and improve cancer services and please do let us know what more we can do to support you and your teams.

Wessex Cancer Alliance updates

- The attached letter; **Advice on triaging patients with lower GI symptoms in the symptomatic service** has been issued today and the Alliance has initiated contact with clinicians to discuss and agree the option that our local system will be advised to follow.
- **Health Education England (HEE)** have funded Wessex Cancer Alliance to undertake a project to scope and develop AHP First Contact Practitioner (FCP) and Advanced Clinical Practice (ACP) roles in cancer care across Wessex. The work commenced in June 2020 and is due to be completed in December 2021. Mary Edwards and Bethan Gane have both been appointed and seconded on a part time basis to lead this work on behalf of the alliance. A steering group has been set up to oversee this work. We will provide regular reports on progress as the project develops. If you would like further information on the project please contact [Fran Williams](#), Partnership Manager or [June Davis](#), AHP consultant advisor.
- A webinar for the **Cancer Improvement Collaborative**, is taking place on 18 August at 11.30-12.30 on MS Teams: [Join Microsoft Teams Meeting](#). This webinar is for any provider who may be interested in participating or if you just want more information.

National Information

- **Specialty guidance for cancer** is being published here: <https://www.england.nhs.uk/coronavirus/secondary-care/other-resources/specialty-guides/>
- **Updated Shielding Guidance** has been published and a copy is attached for your reference.
- **The Quality of Life Survey** will be running from September 2020. It is a joint project between Public Health England and NHS England and Improvement. A website for this is currently under development: www.CancerQoL.england.nhs.uk. Further information about the survey is attached, including a copy of the letter patients will receive and FAQs for staff. Please ensure frontline staff are familiar with this survey so they can support patients with any queries they may have. A poster is also available should you wish to use one in your department, ward or GP Practice.

Contact us

If you need to contact Wessex Cancer Alliance, please email: england.wessexcanceralliance@nhs.net