

PCN Service and Estates Toolkit Delivery Programme

Community Health Partnerships and the National Association of Primary Care on behalf of NHS England and Improvement, have produced a PCN Estates Toolkit, to provide PCNs with a flexible framework and support process for producing robust primary care investment plans with clear priorities that align to wider ICS strategies and will help PCNs to pull together into one place, much of the work your PCN will already be undertaking into a comprehensive plan.

The toolkit has been developed from the published guidance; [Primary Care Networks: Critical thinking in developing an estate strategy](#), into practical tools for use and application.

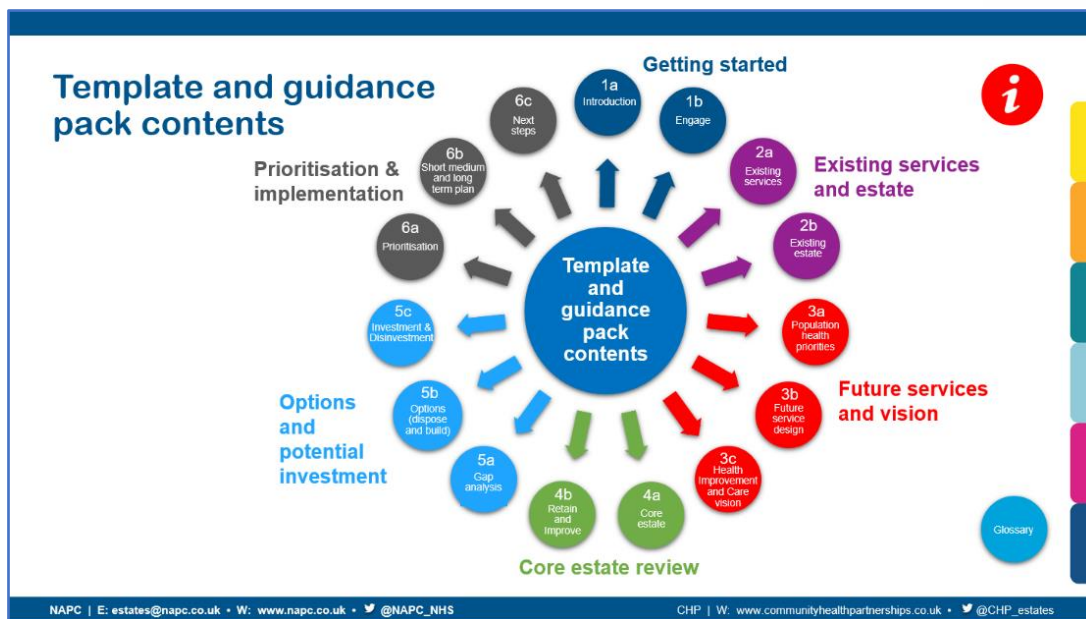
Working with PCNs and the CCG we are looking to support PCNs in the development of their strategies through this managed programme.

The purpose is to provide a national framework to support PCNs and systems to develop their clinical strategies to inform and identify future primary care estates investment requirements, whilst ensuring consistency in quality and outputs; to enable the delivery of suitable, high quality estate provision for Primary Care, and to support service development strategies across the wider health economy.

The PCN Service and Estates Planning Toolkit has two objectives:

- i) To enable each PCN to identify and prioritise their estate optimisation, disinvestment and subsequent capital investment requirements to address population health priorities and future service needs.
- ii) To support the production of capital investment plans for PCNs and Places and help Integrated Care Systems (ICSs) to aggregate and prioritise local primary care investment requirements against other system demands for capital in the future, which is critical to support any future investment decisions.

The image below shows the 6 different stages of the PCN Toolkit:



The toolkit starts with a focus on key stakeholder engagement and consideration of priorities in line with a population health led approach to care model design.

It has been developed in line with other key national work streams, emerging policies and emergency planning requirements.

The toolkit focuses on clinical vision and strategic estate planning, and we recommend reference to other relevant policies and guidance for wider considerations such as the net zero agenda, digital and health technologies, which should all be taken into consideration in completion of the toolkit.

The Toolkit should be used to further develop existing PCN clinical and estate strategies and plans as opposed to replicating or replacing what has already been achieved and should be used flexibly to meet that objective.

It has been developed to align with the Primary Care Data Gathering (PCDG) datasets and SHAPE PCDG Atlas analysis and reporting tools, minimising duplication of effort in establishing the initial baseline.

It is expected that completion of the toolkit will take approximately 4 months, but the exact timescales will depend on the current situation in your PCN and any work which the PCN has already commenced.

The programme will be delivered in 2022/23 and supported by the CCG working with PCNs.

As much work as possible will be done to pre-populate the toolkit templates and minimise work on PCNs but it is critical that the programme has full PCN engagement and ownership.

The toolkit can be accessed via SHAPE. Further information about the toolkit, including Q&As, can be accessed via <https://shapeatlas.net/pcntoolkit/>

A launch event will be held on **Wednesday 25 May 2022, 12.30 – 1.30pm** to talk through the programme in more detail. You will shortly be sent a link to access this event via Microsoft Teams. In the interim if you have any queries, please do not hesitate to contact us: Teresa Wallace – Senior Estates Manager on bswccg.estates@nhs.net