



Please find below, details of the most recent communications and guidance issued for Cancer.
Please share this with colleagues and other teams who may find these updates useful.



Alliance performance for May

May Cancer Waiting Times (CWT) data shows that Wessex is the top performing Alliance for:

- Faster Diagnosis Standard (FDS) **80.8%** (National standard is 75%)
- 31 Day treatment standard - **98.3%** (National standard is 96%)
- 62 days **81.2%** (National standard is 85%) No Alliance in the country achieved 62 days for May and Wessex was the only Alliance to achieve this in April!

Performance fell in April as anticipated, but Wessex were remained the top alliance in all of these standards for **another** month.

Congratulations to all our workforce across the whole care pathway – it is your collaboration and support of each other that allows good performance in one area to be shared and spread quickly, and the learning built collectively that allows us to hold such strong performance consistently and ensure the very best possible care for our patients.

Innovation Fund - Applications open!

Wessex Cancer Alliance Diagnostic
Workforce Innovation Fund is now open for



applications.

The fund aims to support the development and sustainability of specific projects that make full use of a skills-mix approach within the cancer diagnostics workforce to improve the cancer diagnostic pathway.

Demand within cancer diagnostic services has grown at a faster rate than staffing levels. Demand will continue to rise with a growing and aging population and the efforts

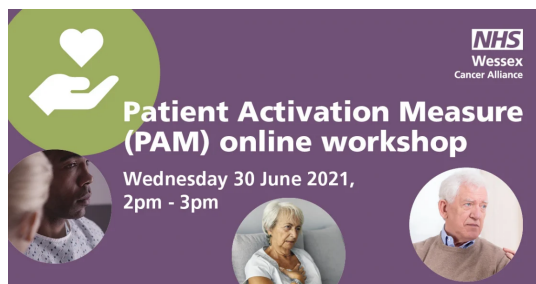
to improve earlier diagnosis of cancer. Cancer Diagnostics Recovery post COVID requires maximising the use of available capacity through system wide working, supported by innovative workforce skill mix approaches.

Funding will need to be used to support innovation in terms of using the workforce differently to improve the cancer diagnostic pathway. The funds should be used for doing something differently and *not* to bridge a short-term problem. Organisations will need to demonstrate the sustainability of the initiative and there is an expectation that learning will be shared across Wessex.

Bids can be submitted for a maximum of £20,000.

Application forms can be requested via email or [download a copy of the application form from our website.](#)

Please submit your completed bid application form to england.wessexcanceralliance@nhs.net by **2nd August 2021**.



Patient Activation Measure (PAM) workshop - listen again!

We were delighted to see so many people join us for this workshop but we know many more were unable so we have made a copy of the workshop available to [watch and listen again, via our website](#). Please

do not hesitate to contact us if you have any feedback or queries about this workshop.



Prostate Cancer webinars for patients

Between August 2021 and January 2022, Prostate Cancer Research are putting on a number of video webinars which are aimed at patients. Attendance is free and all the

details can be found on our [Cancer Matters Wessex](#) website.

Please signpost patients who may be interested in attending these, to the website where they can find out more about each webinar and book to attend.



'Right By You' Southampton city service re-launched

We are pleased to announce that the **Southampton City Right by You service** has now re-launched and is accepting new referrals for people with cancer living in this area.

Right by You Wessex is a service joint funded by Wessex Cancer Alliance and Macmillan Cancer Support, which is being piloted in two sites in the Wessex region. [Read more on our website.](#)

How to refer to the Southampton City Right By You team:

- Right by You can accept referrals from patients or any healthcare professional.
- Service Working Hours: Monday-Friday 9am-5pm
- Contact the Southampton City Right by You Team: Jo Dowle (Cancer Nurse Specialist) and Sally Condra (Cancer Support Worker) by:

Email: uhs.rby@nhs.net

Telephone: [0790 0053 414](tel:07900053414) (messages can be left out of hours)

Out to advert now – Right by You Clinical Nurse Specialist Post West Dorset / Portland:

If you are interested in joining our Right by You Wessex team – we are expanding and will be setting up a service in West Dorset/Portland. We are looking for a Band 7 Clinical Nurse Specialist to be part of this growing regional team. To be part of this exciting initiative please see NHS jobs for the full recruitment details – closing date 15th July 2021.

[Clinical Nurse Specialist in Cancer Care \(Right by You Project\)](#)



Quality of Life survey

The Cancer Quality of Life Survey is a national survey run by NHS England and NHS Improvement and Public Health England. The aim of the survey is to find out how quality of life may have changed for people diagnosed with cancer. We want to see where care is working well or not so well, and if any new services are needed.

To do this, we're asking how people who have experienced cancer are feeling and

comparing their answers with information about their cancer diagnosis and treatment. This will help us to improve the way we support people to live as long and as well as possible.

Since December 2020, all people who have had a breast, prostate or colorectal (bowel) cancer diagnosis have been asked to complete the survey around 18 months after diagnosis. The response rate for this work has been over 50% - which means 1 in 2 asked to complete the survey have done so. From July 2021, we are entering a new phase, where we will begin the roll out to all other cancers.

From July, invitations will be sent to a 10% sample of patients from each of the other included cancers. This includes rarer and less survivable cancers. From Autumn, we plan to roll out to 100% of patients with all other included cancer diagnoses.

The first public release of data from the survey will be published in the Autumn. Initially this will include data from the first three cancer types, but more will be reported as the survey expands. The data will be available to Cancer Alliance/regional level.

Find out more about the [Quality of Life Survey](#).



Clinical Decision Support tool - General Practice survey

The Wessex Cancer Alliance Innovation team are working to find technologies and ways of working that will help identify cancers at an earlier stage and they are keen to understand whether CDS tools are currently being used across Wessex.

If you are a GP, Nurse or Allied Health Professional working in General Practice, they would really like to hear from you.

Find out more on the [Wessex AHSN website](#), where you will also find a link to a short survey.



South East PEOLC Network Clinical Forum

The South East Palliative and End of Life Care (PEoLC) Network are hosting their first clinical forum on **Thursday 29th July 2021, 14:30-16:00**. This is an online event which will bring together multi-disciplinary professionals, from frontline staff to clinical

leaders working in palliative and end of life care in the South East Integrated Systems (ICS).

The forum is open to all staff working in palliative and end of life care in the South East. This includes colleagues from public, independent and voluntary sectors.

Please note, topics and agenda are currently in development, however, we would encourage colleagues that are interested in attending to sign-up via [Eventbrite](#) to stay updated with the forum development.



National Cancer Patient Experience Survey 2021/22

Preparations are now underway for the 2021 national Cancer Patient Experience Survey (CPES) with a view to collecting survey samples from trusts during September. Surveys will be sent to patients in October.

Each Trust has been contacted by the national team and asked to provide contact details for their survey lead who will then be invited to an information webinar (scheduled for 4 and 10 August).

If you have not received this email, or would like more information, please get in touch.



Macmillan Cancer and Social Security report

Macmillan Cancer Support have published a report based on their working age benefit research. The report builds on two pieces of qualitative research undertaken with people with cancer. The first of these involved working with people with cancer to co-produce a set of principles which articulate what they want and need from the benefits system, and the second looked into how their current experiences compare to these principles. Based on that, the report makes some broad



Healthwatch webinar

Digitally excluded people's experience of remote GP appointments

Thursday 15th July – 10-11am

Suitable for:

- GP practice staff
- People working in Primary Care Networks
- Commissioners
- Public and third sector organisations interested in digital exclusion.

Our recent report explored how people have been excluded and what needs to happen so people can get the care they need. At this session, we will talk through our findings, the practical steps GP

recommendations as to the priorities for reform of social security. You can [read the full report here](#).

practices, Primary Care Networks and commissioners can take to better support patients, and our five principles for post-Covid digital healthcare.

Find out more and [book your space here](#).

National Information



Specialty guidance

Specialty guidance for cancer can be found on NICE website
<https://www.nice.org.uk/covid-19/specialty-guides>



Cancer Matters Wessex

Our patient facing information website has been undergoing a refresh! Check it out and please do send us any feedback or suggestions: cancermatterswessex.nhs.uk



National Primary care discussion Group

Next meeting: 20 July 12:00-13:00 via MS Teams

This national discussion group focuses on how primary care can improve the cancer patients experience through developing the role of primary care nurses in cancer. The discussion time is used to share good practice, challenges and synergy.

At this next meeting, Kate Lippiett will be speaking about effective integrated care for patients living with and beyond cancer.

To join this group or for more information, please contact jason.tong@nhs.net



Donald's I Can Therapy journey

The I Can Therapy team have shared a case study about Donald, a cancer patient who has been supported to move more by the I Can therapy team and wanted to encourage other cancer patients to think about getting more physically active. You can [read Donald's story here](#).

Contact us

If you need to contact Wessex Cancer Alliance, please email:

england.wessexcanceralliance@nhs.net



NHS Wessex Cancer Alliance

Wessex Cancer Alliance HQ, Oakley Road,
Southampton
United Kingdom

All recipients of our previous Alliance bulletins
have been sent this email. You can also subscribe
by emailing us:
england.wessexcanceralliance@nhs.net

[Unsubscribe](#)

mailerlite