



User Guide

Contents

- Aims of the Anticipatory Care Planning Dashboard (ACPD)
- Anticipatory Care Overview
- Anticipatory Care Cohort Definition
- Dashboard Views
- About this dashboard page

This dashboard has been created to introduce you and your colleagues to the Anticipatory Care Planning Dashboard.

Please use it and share it freely to spread the word!

For any queries about the dashboard, please get in touch england.communityservices1@nhs.net

Aims of the Anticipatory Care Planning Dashboard

To provide Systems and Places with the information/ data which they need to make informed decisions about which cohort to prioritise locally for Anticipatory Care.

The Anticipatory Care Planning Dashboard (ACPD) was developed aiming at users within ICSs, however, there will be other users from other organisations listed below;

Potential users of the ACPD include:

- Integrated Care Systems (ICS) / Boards (ICB)
- Health and Social Care
- Specific users including ICS/ICB Analysts, system and place based leaders, Commissioners and some frontline clinicians and professionals e.g. GPs, Advanced Nurse Practitioners

Overview of Anticipatory Care

Anticipatory Care will provide proactive and personalised health and care for a specific sub-set of individuals with multiple long-term conditions, including frailty, delivered through multi-disciplinary teams in local communities.

Aims of the programme

Anticipatory Care aims to optimise use of the health and care system for the Anticipatory Care population, by intervening earlier, proactively, and more holistically, whilst the patient is at home. This should:

- Reduce use of avoidable unplanned care by ensuring patients have access to the planned health and care support they need in the community
- Reduce avoidable exacerbation of ill health, reducing the need for more costly health and care provision downstream

Together with other community care models being delivered to boost out-of-hospital care AC will also:

1. Reduce health inequalities through improving access, experience and outcomes in line with Core20PLUS and the five priority areas for tackling health inequality
2. Deliver a better patient experience, by ensuring patients receive integrated health and care at home, resulting in a better quality of life
3. Further develop the evidence base for proactive, integrated care in community setting
4. Improve staff retention and satisfaction through opportunities for development, multidisciplinary working and effective coordination.

Priority population groups

The national cohort for Anticipatory Care is individuals living with multiple long-term conditions, where MLTC is defined as two or more long-term health conditions, and where frailty is considered an MLTC.

Within this national cohort, systems should use data-driven approaches to identify which individuals in the below sub-cohorts to prioritise:

- Those living with **frailty** – defined as adults living with moderate or severe frailty
- Those experiencing **health inequalities** as defined by Core20PLUS
- Those individuals reliant on **unplanned care**- individuals who have attended A&E or urgent care services five or more times in the last 12 months and/or have been admitted as an emergency for a chronic ambulatory care sensitive condition (ACSC).

Applying these data lenses will provide systems with a sizeable cohort who should be further prioritised to provide the target population, based on either those who:

- Have been admitted as an emergency twice or more often in the last 12 months
- May be admitted as an emergency, according to risk stratification or risk prediction tools (where available)

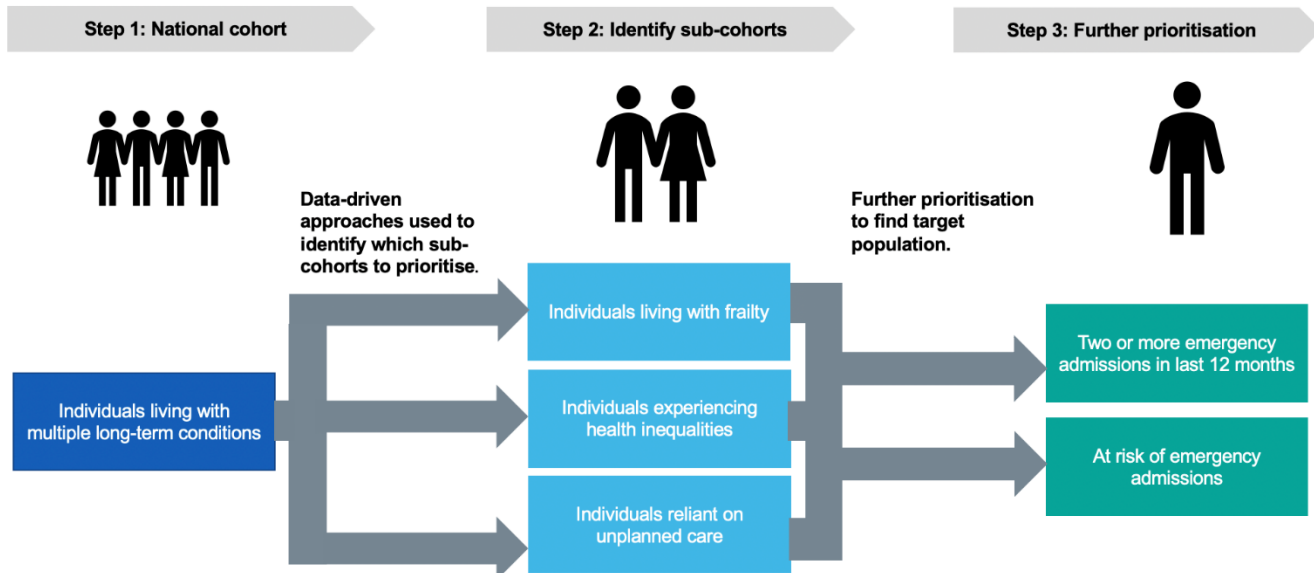
These sub-cohorts may change in future years, as methodologies and data sets enabling risk stratification develop further.

Exclusions:

- Individuals living in care homes, who will receive proactive care through Enhanced Health in Care Homes programme
- Individuals better served by specialist services; Children and Young People; those with mental health conditions but without physical health needs; and those requiring specialist palliative care.


Anticipatory Care Cohort


The cohort for AC focuses on those who could benefit the most.



Exclusions: individuals living in care homes and those better-served by specialist services, including children and young people, those with mental health conditions but no physical health condition, and people accessing specialist palliative care services.

Feedback on using the ACPD

 Anticipatory Care Planning

 Edit
National Data Platform (Foundry)

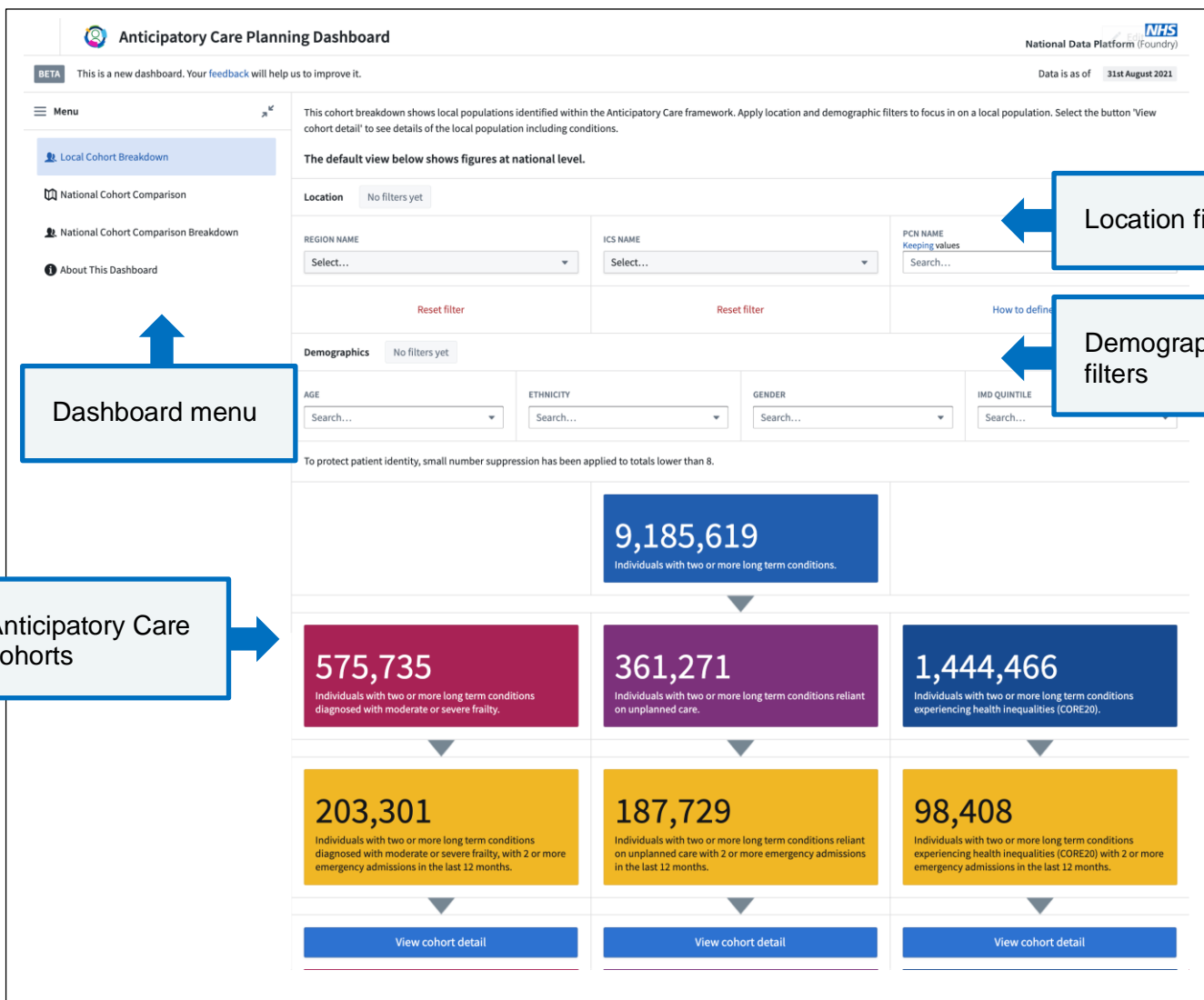
BETA This is a new dashboard. Your [feedback](#) will help us to improve it.

Data is as of 31st August 2021

This is a BETA version of the dashboard, therefore any feedback from you will help us improve it.
Click [here](#) to provide feedback.

Dashboard Overview

- This is the default view with absolute figures at National level.
- Apply location and demographic filters to focus in on a local population.
- Select the button 'View cohort detail' to see details of the local population including conditions.
- This cohort breakdown will show local populations identified within the Anticipatory Care framework.



Location Filters

These are the location filters, choose the location Region/ICS to view your local cohorts.

Select your Region
from the list

Select your ICS

Select your PCN

Location No filters yet

REGION NAME

Select...

Reset filter

ICS NAME

Select...

Reset filter

PCN NAME

Search...

How to define a place

Location Ics Name is NORTH LONDON PARTNERS IN HEALTH & CARE (STP) and Pcn Name is any of 7 values and Region Name is LONDON

REGION NAME

LONDON

Reset filter

Demographics No filters yet

AGE

Search...

ETHNICITY

Search...

GENDER

Search...

PCN NAME

BARNET 4 PCN X BARNET 1W PCN X

BARNET 2 PCN X BARNET 3 PCN X

BARNET 1D PCN X BARNET 5 PCN X

BARNET 6 PCN X

✓ BARNET 1D PCN

✓ BARNET 1W PCN

✓ BARNET 2 PCN

✓ BARNET 3 PCN

✓ BARNET 4 PCN

✓ BARNET 5 PCN

You also have the option to multi-select the PCNs that collectively make up a Place-based partnership.

Demographic filters

These are demographic filters. Select the demographic filters you want to focus on.

Demographics No filters yet

AGE	ETHNICITY	GENDER	IMD QUINTILE
Search...	Search...	Search...	Search...

AGE

Search...

- 18-29 yrs
- 30-39 yrs
- 40-49 yrs
- 50-59 yrs
- 60-69 yrs
- 70-79 yrs
- 80-89 yrs

Age filter shows age ranges from 18+ to reflect the age eligibility for Anticipatory Care.

You can also use this to select a specific age group to focus on.

Asian or Asian British

Black, African, Caribbean or Black British

Mixed or Multiple ethnic groups

Other ethnic group

Unknown

White

Keeping values

Search...

Ethnicity filter shows a list of different ethnic categories.

You can use this to select a specific ethnic category to focus on.

GENDER

Keeping values

Search...

FEMALE

INDETERMINATE

MALE

Gender filter shows the categories to select from.

You can also use this to select a specific gender category to focus on.

IMD QUINTILE

Search...

1 - most deprived

2

3

4

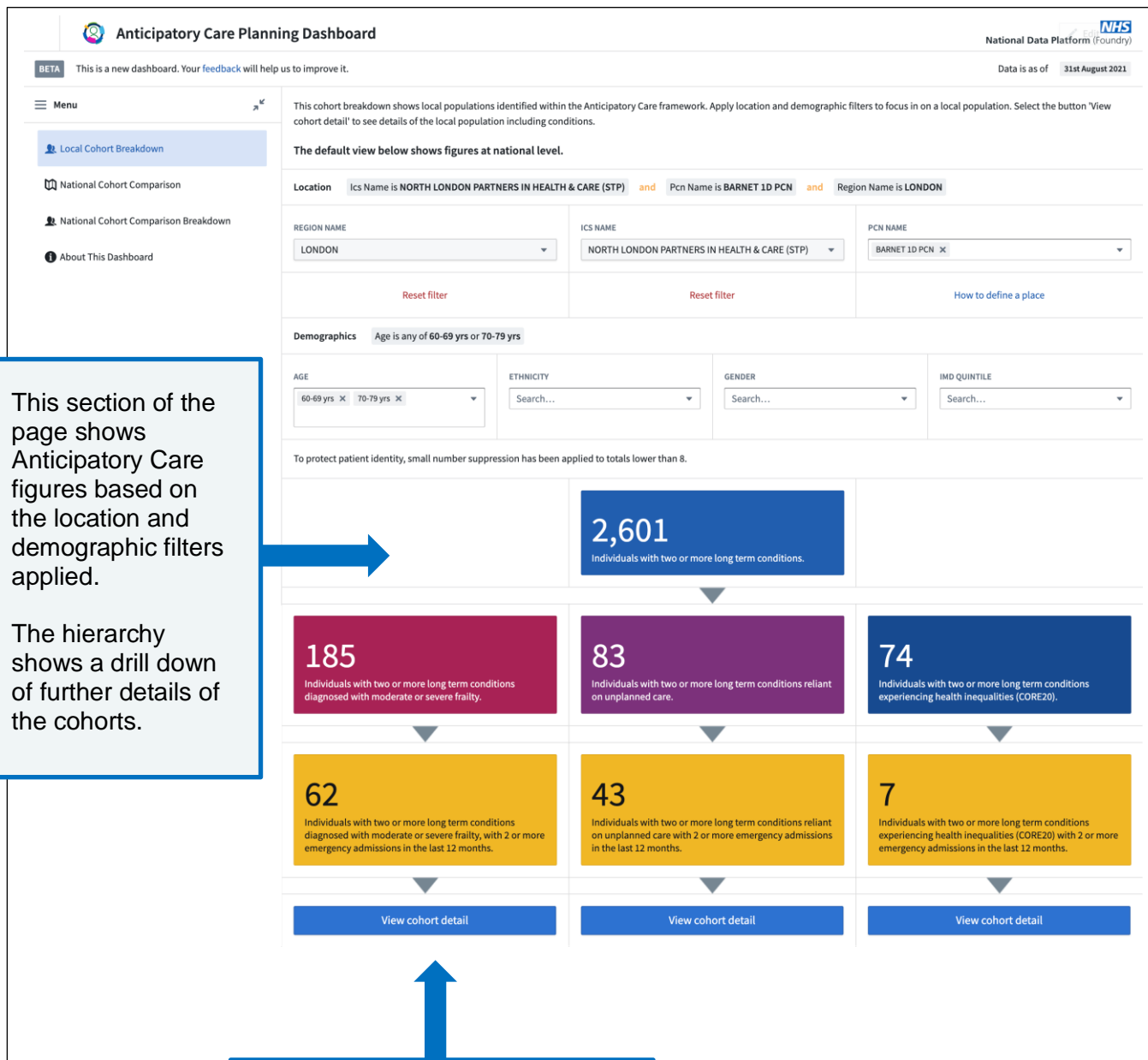
5 - least deprived

IMD Quintile filter shows the different quintiles.

You can select a quintile to focus on.

Local Cohort Breakdown

This example shows the local cohort breakdown screen with location filters and demographic filters applied.



This section of the page shows Anticipatory Care figures based on the location and demographic filters applied.

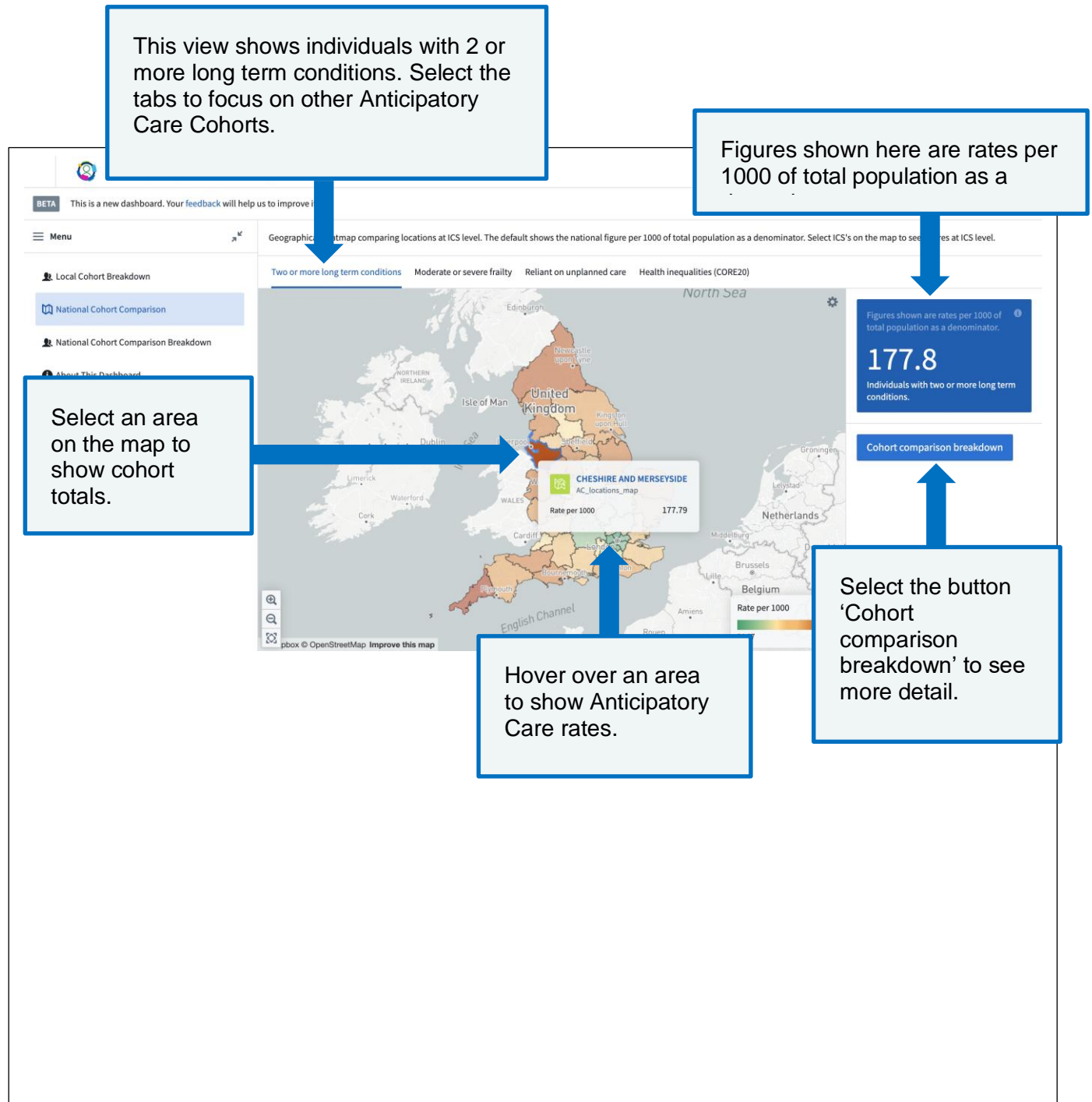
The hierarchy shows a drill down of further details of the cohorts.

Click on '**View cohort detail**' to see further information about each cohort breakdown.



National Comparison View

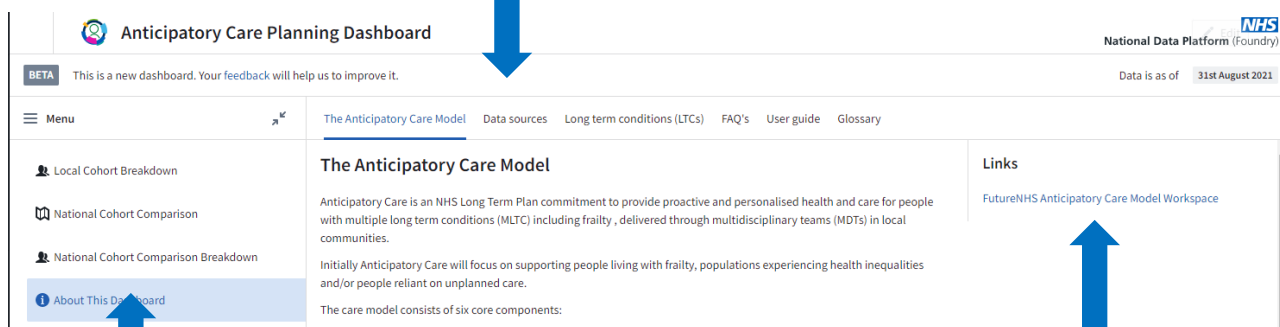
This is the National Cohort Comparison page which displays a geographical heat map showing locations at ICS level.



About this dashboard page

The About this Dashboard contains background and context information about the Anticipatory Care Planning Dashboard, model and data sources.

Select tabs to learn more about the dashboard.



The screenshot shows the Anticipatory Care Planning Dashboard interface. At the top, there is a header with the NHS logo and the text 'National Data Platform (Foundry)'. Below the header, there is a navigation bar with tabs: 'The Anticipatory Care Model', 'Data sources', 'Long term conditions (LTCs)', 'FAQ's', 'User guide', and 'Glossary'. The 'About This Dashboard' tab is selected in the left-hand menu. The main content area displays 'The Anticipatory Care Model' with a description and a list of core components. On the right-hand side, there is a 'Links' section with a link to 'FutureNHS Anticipatory Care Model Workspace'.

Click here to access more information about the dashboard.

Useful links to further information are displayed on the right hand side of each page.