



Bath and North East Somerset,
Swindon and Wiltshire
Clinical Commissioning Group

28 February 2022

People and Communities Bulletin



Latest updates and engagement opportunities across your community



the care forum

Seldom heard groups can share their thoughts via a new Health Equality Partnership survey

The Care Forum, in partnership with Bath and North East Somerset, Swindon and Wiltshire Clinical Commissioning Group (BSW CCG) are promoting an online engagement survey, designed to help understand how communities across the region can be better involved with health care design.

We know that people from Black and minority ethnic (BME) communities, those who are living on a low income, and those living in deprived areas have innovative views on how services could be delivered different both to and in their community. We are investigating how health services have worked with these groups in the past, and find a way that future collaboration can be improved.

An online survey has been created and we are encouraging people from the above mentioned groups to complete it, so that we can use their thoughts and feedback to help us better understand how things can be improved.

[Have your say and take the survey](#)

Join Healthwatch for the launch of the Your Care, Your Way campaign

Healthwatch Wiltshire is joining forces with other Healthwatch organisations across England for the launch of the Your Care, Your Way campaign, which calls for improved accountability and implementation of the Accessible Information Standard (AIS).

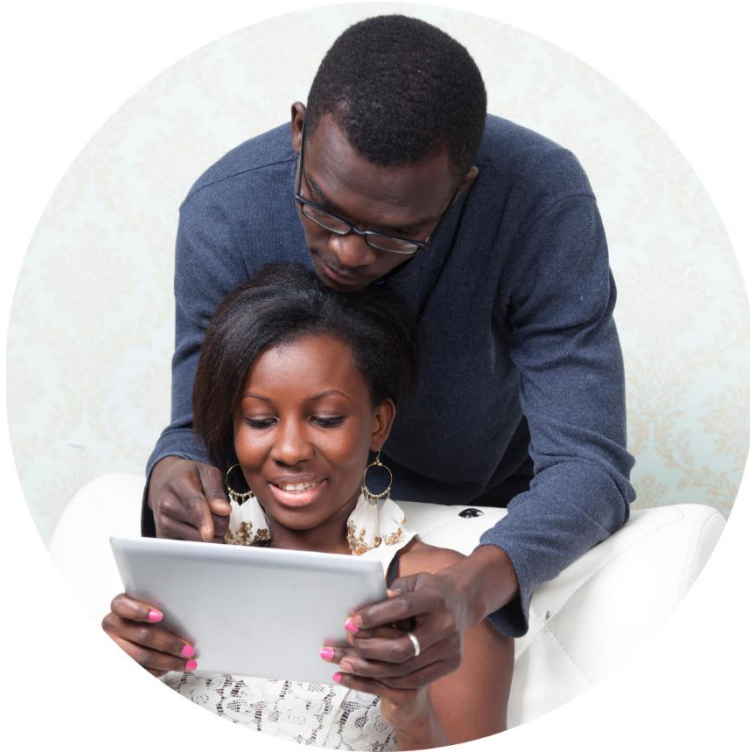
The standard requires that all publicly-funded health and social care providers identify, record, flag, share and meet the information and communication needs of those who use their service to ensure equal access to healthcare. However, new research by Healthwatch England and partner organisations has shown that this is not happening, with many services overlooking peoples needs and failing to provide the right support.

Staff working in the NHS and social care services, service providers, ICS leaders, voluntary sector and professionals are invited to learn more in an online webinar hosted by Healthwatch England from **3pm-4:30pm on Wednesday 2 March 2022**.

You will be welcome to ask questions and give your contribution to the discussion about how you and your organisation can get involved in supporting the campaign, which launched on **23 February 2022**.



[Book a place on the webinar](#)



Shaping a Healthier Future - Together: A thank you

We at BSW CCG wanted to thank everyone who gave their time and got involved in contributing feedback on the health and care model across Bath and North East Somerset, Swindon and Wiltshire. This feedback directly influenced proposed recommendations in the new revision of the care model, including:

- 1: Digital inclusion and exclusion
- 2: Mental health provision
- 3: Workforce, recruitment and access to services
- 4: Finance models
- 5: Vulnerable clients and their access to mainstream services
- 6: Role of the voluntary, community and social enterprise sector
- 7: Role of unpaid carers, volunteers, universities schools and public health

The complete findings and recommendations are now available to view:

[Full Shaping a Healthier Future report](#)
[Summary Shaping a Healthier Future report](#)
[Shaping a Healthier Future infographic](#)

More information about the
Shaping a Healthier Future
project

Would you like to help us shape our people and communities strategy?

We at Bath & North East Somerset, Swindon and Wiltshire Clinical Commissioning Group (BSW CCG) would like to hear from anyone who wants to join our Citizens Sounding Board.

Why is this important? We want to...

- 1: Have a better understanding of the people and communities we serve, with a particular focus on health inequalities and seldom heard communities.
- 2: Co-design with you, so that you are a vital part of shaping a new engagement approach.
- 3: Listen and learn, and hear a diverse range of perspectives, constructive feedback and challenge.
- 4: Seek solutions together, not in isolation

To get started we are planning two online workshops on **2nd and 16 March 2022, both sessions are at 1pm-2:30pm**. You only need to attend one of these.

If you are interested, please contact us through our BSW engagement inbox

(bswccg.engagement@nhs.net) and we will come back to you with an event booking and further information.

Covid-19 information

Information about Covid-19 vaccinations

If you have any queries about the Covid-19 vaccination please check the frequently asked questions section of our website, which is being refreshed and updated regularly.

[Frequently asked questions](#)

Sign up to our stakeholder briefing

Each week, the CCG issues an update to all its stakeholders on the latest news, developments and goings-on from the Covid-19 vaccination programme.

Any person who would like to receive this easy-to-digest round up, which is sent every Thursday, should send an email to bswccg.communications@nhs.net to sign up.

Press releases

Read the latest news from across BSW CCG

[Bath and North East Somerset, Swindon and Wiltshire Integrated Care Board appoints Non-Executive Directors to help shape the future of health and care for local people](#)

[Living safely with Covid-19 requires continued caution, say local health officials](#)

[Full list of press releases](#)

Latest information and updates from BSW CCG

Dates for future engagement forums

The next meeting of the B&NES Your Health Your Voice forum will take place on 9 June 2022 via Microsoft Teams from 2pm-3:30pm.

The next meeting of the Swindon Patient and Public Engagement forum will take place on 23 June 2022 via Microsoft Teams from 2pm-3:30pm.

For more information, or to register your interest, please email the BSW Engagement team via bswccg.engagement@nhs.net

**The next issue of the People and Communities bulletin will be on the
14 March 2022**

**If you would like information to be included in the next bulletin, send
through by midday on 8 March 2022. For this and for signing up
to future bulletins please email bswccg.engagement@nhs.net**



If you no longer wish to receive our emails please unsubscribe.
If this message doesn't show clearly, please view it in your browser.

© 2021 - Bath and North East Somerset, Swindon and Wiltshire